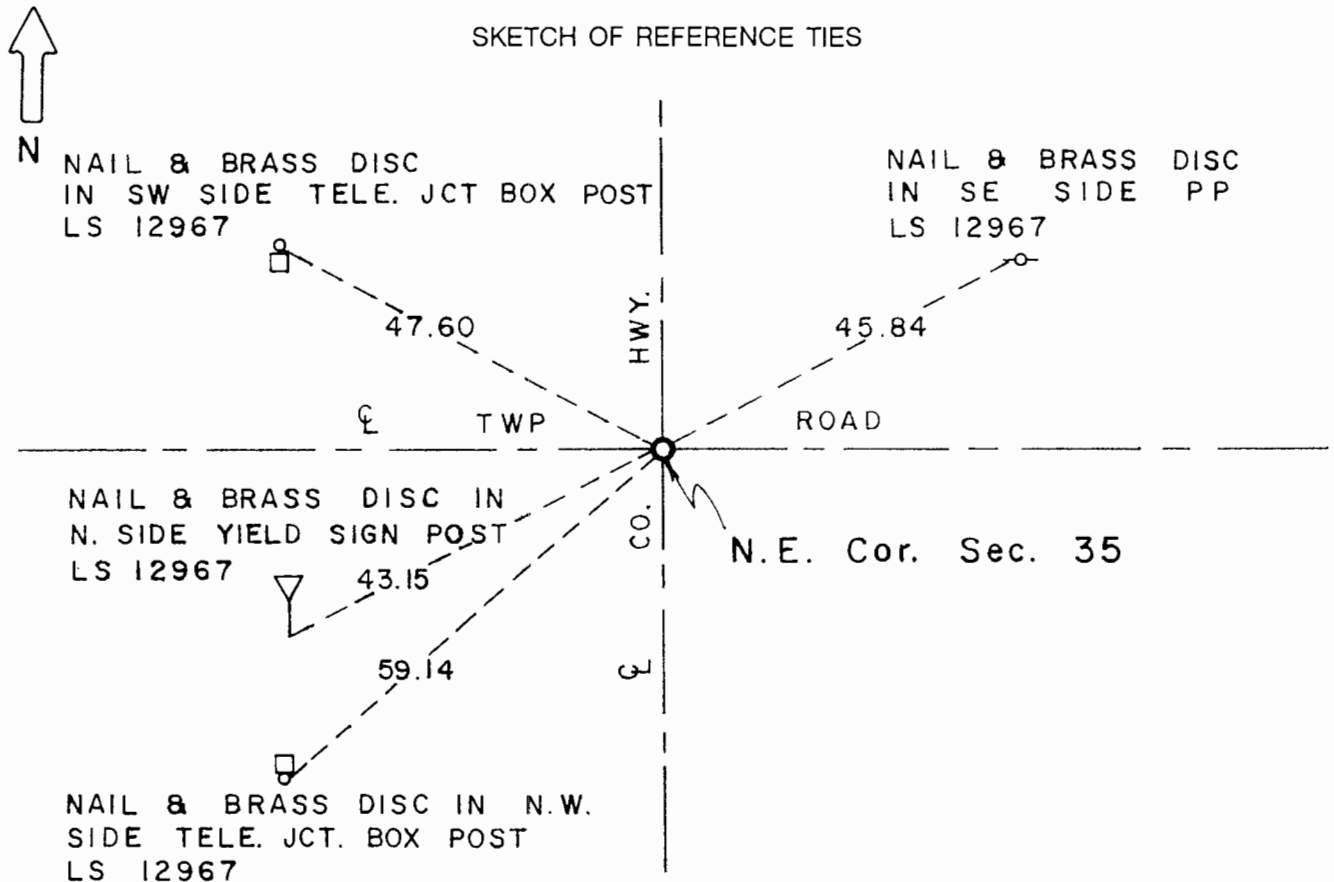


CERTIFICATE OF LOCATION OF GOVERNMENT CORNER

Northeast Corner of Section **35** , Township **108** , Range **41** 5th P.M.

STATE OF MINNESOTA, County of Murray.

Statement: May 26, 1989 - Found Capped Re-rod, Concrete Monument with cross on top, wooden hub, and a stone. Left monument and placed a Mn/DOT Cast Iron Monument.



Statement of evidence relative to this corner location is on the back of page.

I hereby certify that this document and the data contained herein was prepared by me or under my direct supervision and that i am a duly Registered Land Surveyor under the laws of the State of Minnesota.

Duane A. Bonnema
 Duane A. Bonnema

2-21-91
 Date

Minnesota Registration No. 14895

OFFICE OF THE COUNTY RECORDER
 COUNTY OF MURRAY **MAR 1 1 1991**

I hereby certify that this document was filed in the County Recorder's office at ___M. on the ___ day of _____ A.D., 19__

County Recorder *James V. Johnson*

By _____, Deputy
 DOCUMENT NO. _____

Northeast Cor. Sec. 35 T108N-R41W

Statement:

- August 1861 Original Government Land Office Surveyor L. G. M. Fletcher records in his field notes, "Built mound with trench pits, charred stake, per instructions."
- April 25, 1905 J. W. Woolstencroft, County Surveyor, records in the County Surveyor's Record Book, page 188, "Government Corner." He also shows that he measured to the Corner while doing survey work in Section 26.
- Sept. 15, 1913 J. W. Woolstencroft, County Surveyor, records in the County Surveyor's Record Book, page 234, "Stone established by previous survey." He also shows that he measured to the Corner while doing survey work in Section 25.
- Mid 1930's The Murray County Surveyor shows in the County Surveyor's Record Book "Concrete stone," and gives witness ties to the Corner.
- 1938 The Murray County Highway Engineer's Office shows that they found the concrete monument and established witness ties to the Corner.
- 1982 The Murray County Highway Engineer's Office shows that they found an RLS pin and established witness ties to the Corner.
- May 26, 1989 Duane A. Bonnema, LS Reg. No. 14895, found a capped re-rod at the road surface marked LS #12967 "Martin". A concrete monument with a cross on top was found 1 foot below the surface. A nail in a 2 inch square wooden hub was found 2.3 feet below the surface. An 8 inch x 14 inch x 21 inch stone was found at a depth of 3 feet. The monuments were lowered and a Minnesota Department of Transportation Cast Iron Monument was placed just below the road surface.